

# PLAYGROUND FEEDBACK

FROM @FRECKLEFACEDADVENTURES

82 mothers participated (from all over Nashville)

106 text box answers were submitted

Answers were collected over a 24 hour window



## SHADE

54 submissions mentioned shade

Important themes:

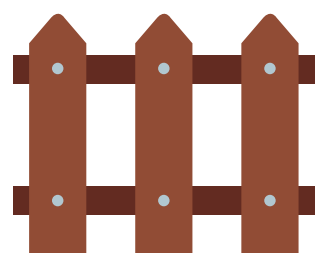
- Having the equipment covered
- Having covered benches for parents

## FENCE

22 submissions mentioned fencing

Important themes:

- Needs to prevent kids from escaping
- One gate or one opening only

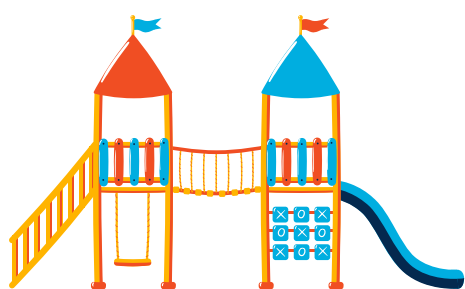


## RANGE OF AGES

20 submissions mentioned being designed for a range of ages

Important themes:

- Separate tot spot
- Equipment that is not so polarizing (something that young toddlers and babies don't feel excludes them)
- Slides that are accessible to all ages (ie: not using helix steps to reach slides bc toddlers can't climb them)
- Preferring ramps and slides over stairs and poles



## PAVEMENT

19 submissions mentioned pavement

Important themes:

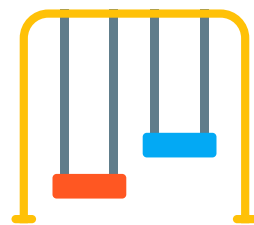
- Rubberized or padded pavement is best
- NO MULCH

## SWINGS

11 submissions mentioned swings

Important themes:

- Tandem swings are great
- Have a variety of swing types
- Place them near the play structure for parents who have two or more kids to watch



## SAFETY

10 submissions mentioned thoughtfulness in safety

Important themes:

- Railings around upper levels of the equipment
- No openings or sudden drop offs that would allow for kids to fall, including openings for firemen's poles from top levels

## OTHER TOP SUBMISSIONS

Good sight lines for parents--9

Benches for parents--7

Accessibility--6

Open play nature items--5

Bathrooms nearby --3

Variety of slides, non-metal equipment, paved walking path, and water features--2